

## INSTALLATION INFORMATION

### EMG Model: PA-2

### SPECIFICATIONS:

Input Impedance (Ohms)	500K
Output Noise@ 60Hz	-91 dbV
Output Noise(Spectral)	-130 dbV (-110 dbV @ Full Boost)
Output Impedance (Ohms)	2K
Current@ 9V (Microamps)	290
Battery Life (Hours)	1725
Maximum Supply (Volts DC)	27

### General Operation:

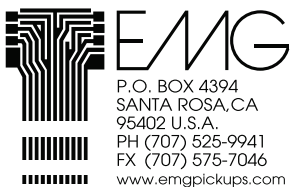
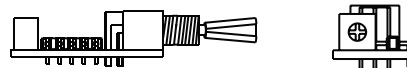
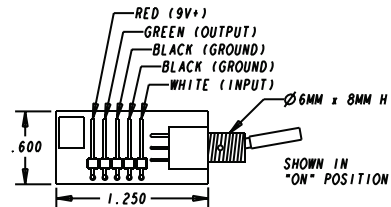
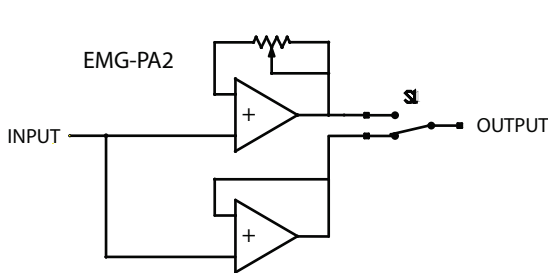
The PA-2 is a booster pre-amp that can boost the output of any pickup, active or passive up to 20dB, the equivalent of 10 times normal gain. It is meant to be used at the output of the guitar just before the output jack. Because of the circuit configuration, high impedance pickups will have their output impedance converted to low impedance in both switch positions. The PA-2 does not change the phase of the pickup.

A few notes about boosting:

The amount of "clean" boost you can get from the PA-2 is dependent upon the amount of gain you set on the trimpot and the level of power supply you have. The usual supply is 9 Volts. If you set the trimpot for maximum boost (20dB) the maximum input is .70 Volts when supplied with a 9 Volt battery. If you set the trimpot 1/2 way (10dB) the maximum input will be 1.4 Volts input for a "clean" output. By increasing the power supply to 18 Volts, you can virtually double the "clean" headroom of the PA-2.

Boosting beyond the "clean" levels will only "square off" the signal and result in an "overdriven" sound.

As the battery voltage begins to drop from use, the amount of "Clean" headroom will diminish as well. If you want a clean boost, then replace your battery fairly often, or operate at 18 Volts to maximize headroom. If you don't care about how clean the signal is, but just want to blow your mind, don't worry about the supply voltage until you *don't* get the sound you're looking for then change the battery or... Just... Rock on!



### Warranty:

All EMG Pickups and accessories are warranted for a period of two years. This warranty does not cover failure due to improper installation, abuse or damage. If upon examination the pickup is determined to be defective, a replacement will be made at no charge. Warranty replacement products are covered by this same warranty. This warranty covers only those pickups and accessories sold by authorized EMG Dealers. This warranty is not transferable.

## Installation Instructions:

### EMG Model: PA-2

1) The PA-2 requires a 1/4 inch hole (6.2mm) and the barrel length is 5/16 inches long (8mm). Optimum control compartment body thickness is less than 1/4 inch.  
 Note: Place one flat washer over switch barrel before installation.

2) The PA-2 features EMG's 5 pin Quik-Connect system plug for ease of installation and it allows you to exchange other EMG Accessory Circuits in it's place. The EMG 5 pin connector always uses the following legend for hook-up.

#### Wire Legend:

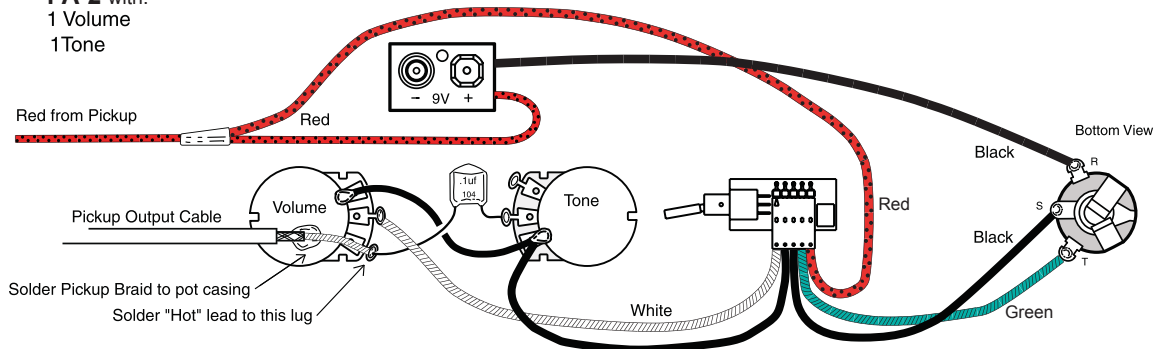
<b>Red</b>	<b>Supply Voltage +9/+18/+27</b>
<b>Green</b>	<b>Output of PA-2</b>
<b>Black</b>	<b>Ground</b>
<b>Black</b>	<b>Ground #2 for convenience</b>
<b>White</b>	<b>Input to PA-2</b>

3) Install the PA-2 in the guitar and then follow the diagram(s) on this sheet that best fit your installation.

The diagrams shown are for EMG Active Pickups only. All diagrams show the Red Wire coming from the pickups connected to the battery. If you are installing EMG-HZ Passive Pickups refer to those diagrams. The Red Wire of the HZ Pickup is NOT for battery power, it is a coil wire.

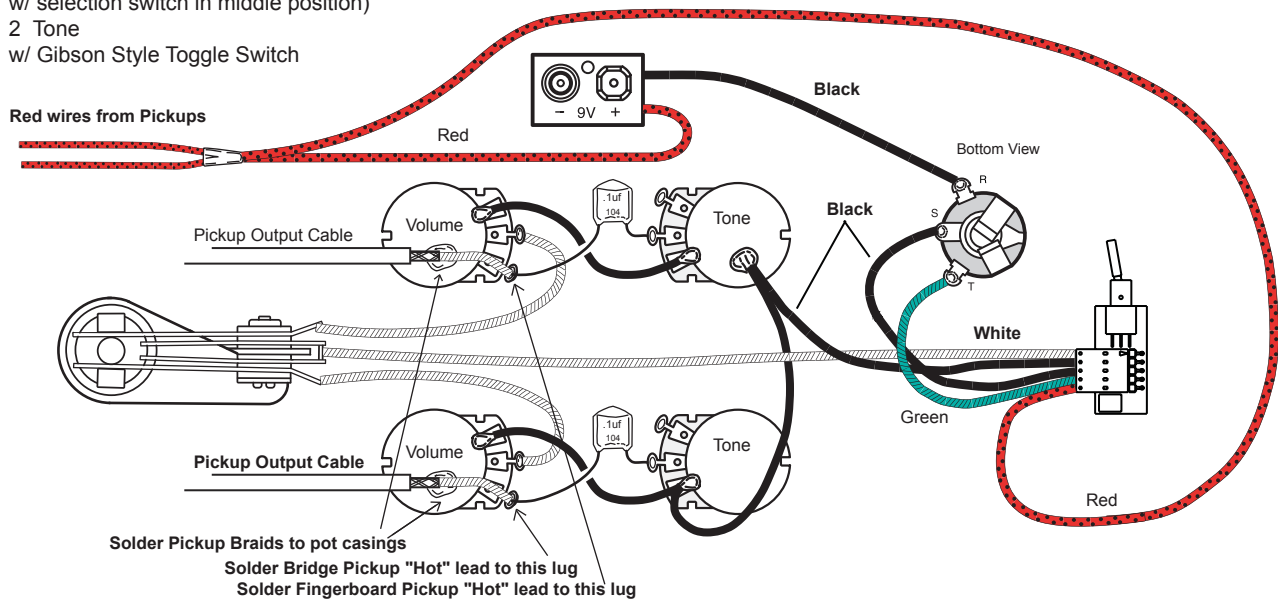
### Diagram 1

PA-2 with:  
 1 Volume  
 1 Tone



### Diagram 2

PA-2 with:  
 2 Volume (Either volume will act as master w/ selection switch in middle position)  
 2 Tone  
 w/ Gibson Style Toggle Switch



**Diagram 3**  
PA-2 on the output of an  
EMG-S Style System

